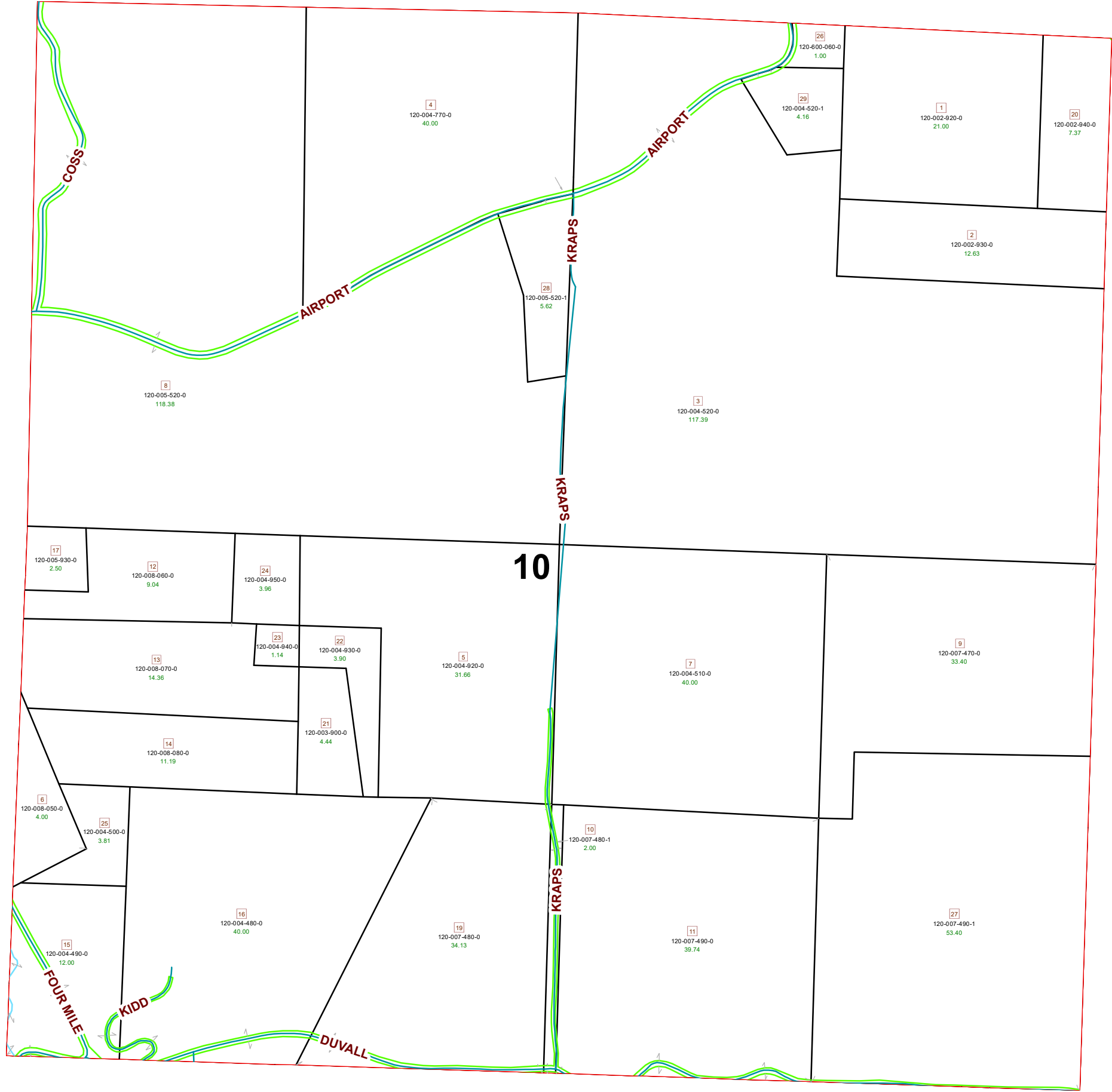


# MEIGSVILLE TOWNSHIP SECTION 10 R11 TWP 10 MORGAN COUNTY, OHIO



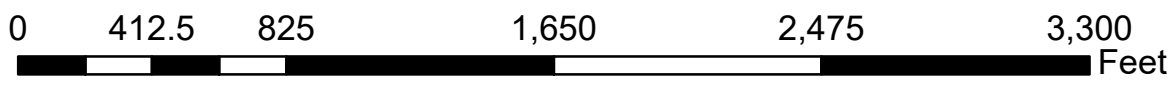
PIN	VOL	PAG	Owner	LegalDescr	Acres
120-600-060-0	D.V 80	555	CEMETERY (SALEM)	R11 T10 S10 LOT 3	1
120-007-490-0	D.V 198	38	DEMSTER RICHARD L & TAMARA S	R11 T10 S10 SD 11	39.74
120-007-480-1	D.V 198	38	DEMSTER RICHARD L & TAMARA S	R11 T10 S10 SD 10	2
120-002-930-0	D.V 199	792	FERGUSON JARED J & KAREN L	R11 T10 S10 SD 2 S	12.63
120-002-940-0	D.V 199	792	FERGUSON JARED J & KAREN L	R11 T10 S10 SD 20	7.37
120-002-920-0	D.V 199	792	FERGUSON JARED J & KAREN L	R11 T10 S10 SD 1 S	21
120-004-490-0	OR110	474	KIDD TERRY	R11 T10 S10 SD 15	12
120-004-480-0	OR110	474	KIDD TERRY	R11 T10 S10 SD 16	40
120-004-500-0	OR110	474	KIDD TERRY	R11 T10 S10 SD 25	3.81
120-004-520-0	OR110	474	KIDD TERRY	R11 T10 S10 SD 3	117.39
120-004-520-1	OR166	244	KIDD TODD & HEIDI	R11 T10 S10 SD 29	4.157
120-004-510-0	OR219	1674	KIDD TRULIA	R11 T10 S10 SD 7	40
120-004-770-0	OR219	1674	KIDD TRULIA	R11 T10 S10 SD 4	40
120-004-930-0	OR228	1679	KRAPTS MARSHA ET AL	R11 T10 S10 SD 22	3.9
120-004-940-0	OR228	1679	KRAPTS MARSHA ET AL	R11 T10 S10 SD 23	1.14
120-004-950-0	OR228	1679	KRAPTS MARSHA ET AL	R11 T10 S10 SD 24	3.96
120-004-920-0	OR228	1679	KRAPTS MARSHA ET5 AL	R11 T10 S10 SD 5	31.66
120-007-490-1	OR228	1293	KURTZ KENNETH & DONALD	R11 T10 S10 SD 27	53.4
120-007-470-0	OR228	1293	KURTZ KENNETH & DONALD	R11 T10 S10 SD 9	33.4
120-005-520-0	OR233	395	MCCORMICK CHESTER B & DOROTHA	R11 T10 S10 SD 8	118.38
120-005-520-1	OR108	618	MCCORMICK MICHAEL B & RONDA J	R11 T10 S10 SD 28	5.616
120-005-930-0	D.V 170	121	MURRELL MICHAEL W & BARBARA O	R11 T10 S10 SD 17	2.5
120-007-480-0	D.V 197	299	SAMSON BENJAMIN FRANKLIN ETAL	R11 T10 S10 SD 19	34.13
120-008-080-0	OR206	438	TTT SMITH PROPERTIES LLC	R11 T10 S10 SD 14	11.19
120-008-050-0	OR206	438	TTT SMITH PROPERTIES LLC	R11 T10 S10 SD 6	4
120-003-900-0	OR214	3338	TTT SMITH PROPERTIES LLC	R11 T10 S10 SD 21	4.44
120-008-070-0	OR206	438	TTT SMITH PROPERTIES LLC	R11 T10 S10 SD 13	14.36
120-008-060-0	OR206	438	TTT SMITH PROPERTIES LLC	R11 T10 S10 SD 12	9.04



**Boundaries**

- Hydro (Blue line)
- Roads (Red line)
- County (Black dashed line)
- Lot (Yellow line)
- Parcel (Black solid line)
- Township (Red dashed line)
- ROW (Green line)
- Section (Red solid line)

Source: Morgan County Engineer's Office  
 Author: Marcia Wolfe  
 Date: 7/27/2020



Disclaimer: The information that these maps contains is for reference purposes only. Please bring any errors to the attention of the Engineer's Office staff. Thank you